

GAFCHROMIC® RTQA



INTERNATIONAL SPECIALTY PRODUCTS

- Light-field and radiation-field alignment
- Precision star shots
- Position verification for HDR
- Autoradiography of implantable seeds, plaques and other sources

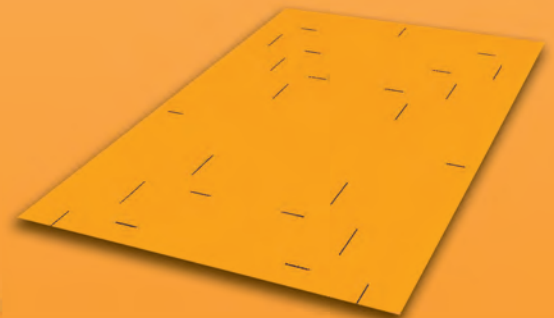
QA+



RTQA -1010
Light-field alignment test



RTQA -111
Brachytherapy source positioning

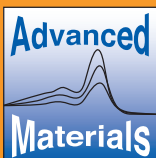


RTQA-1010P
Pre-scaled



RTQA -1417
Larger light-field alignment test

Radiochromic film for QA and
commissioning of radiotherapy modalities



A BUSINESS UNIT OF ISP

GAFCHROMIC® RTQA was designed for routine quality systems management of all modalities of radiotherapy with ease and confidence. It is a user friendly, cost effective, reliable and simple tool to meet quality assurance objectives.

FEATURES

This self-developing radiochromic film is ideal for use in the film-less environment of the modern hospital and has the following characteristics:

- Dynamic range from **0.02 Gy to 8 Gy**
- Develops in real time. There is no post-exposure treatment
 - Eliminates the need for a processor
 - Eliminates chemical waste
- Can be handled in room light
 - Eliminates the need for a darkroom
- Convenient to handle and easy to cut
 - Size and shape it to your needs – use only what you need for the job
- Water resistant
 - Immerse it in a water phantom
- Competitively priced with conventional films

QUALITATIVE DOSIMETRY

For faster, easier, more convenient and less costly QA testing of radiotherapy sources and the commissioning of therapy equipment:

- Light-field and radiation-field alignment
- Star-shots
- Positioning verification for HDR
- Autoradiography of implantable seeds, plaques and other sources

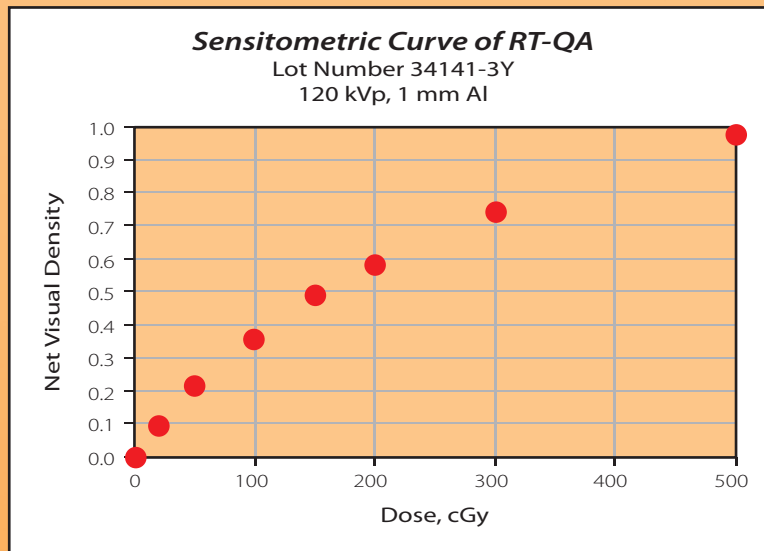
WHY USE GAFCHROMIC® RTQA?

- *Hassle free:*
 - Just position it, shoot it and look. Why spend your valuable time going to a darkroom and waiting for film to develop? You don't need a darkroom, you don't need a processor.
- *Simple and precision built:*
 - Just position it, shoot it and look. If the light field isn't aligned with the radiation field you see it immediately and adjust. Eliminate the time spent for repetitive exposures, measurements and adjustments.
- *Cost effective:*
 - Just position it, shoot it once and look. Make your adjustments and move on. You won't need to spend your valuable time on second and third tries and waste extra pieces of film.
 - Why use a large film for a small job? Why waste money on film that's not getting exposed? With GAFCHROMIC® RTQA you can size and shape the film to suit the task.

Offers multiple solutions

Couple your creativity, experience and knowledge with GAFCHROMIC® RTQA and you'll find even better use like watching the effect of exposure in real-time on the monitor.

SENSITIVITY OF GAFCHROMIC® RTQA



The response of the GAFCHROMIC® RTQA film is dependent upon factors specific to the facility such as the energy spectrum of the radiation source, the characteristics of the densitometer, film scanner or other means of measurement, etc. Hence the user should determine the dose-density response under the conditions pertaining to their facility. Since the absolute response of GAFCHROMIC® RTQA may vary from lot to lot, the user should re-measure response when changing the lot number.

FILM CONFIGURATION

Comes in three different sizes:

1. P/N GAFCHROMIC® RTQA -111 which is 1.25"x11" in dimension
2. P/N GAFCHROMIC® RTQA -1010 which is 10"x10" in dimension
3. P/N GAFCHROMIC® RTQA -1010P which is 10"x10" in dimension
4. P/N GAFCHROMIC® RTQA -1417 which is 14"x17" in dimension

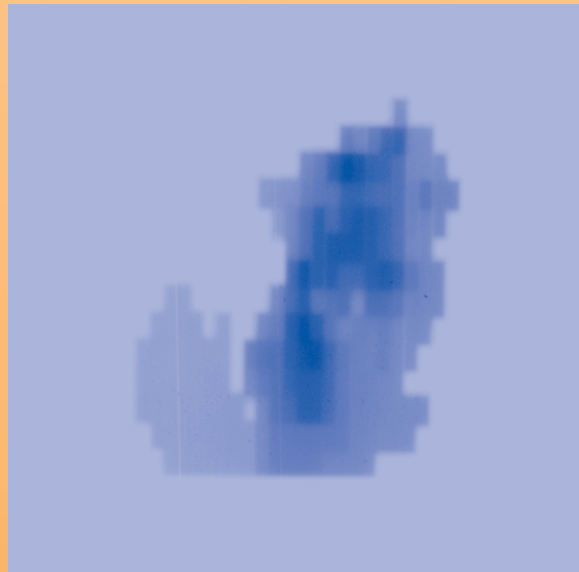
Configuration	Top Substrate	Active Layer thickness ¹	Base Substrate
Three-layer laminate: Substrate-active layer-substrate	Clear orange polyester 97μ	17μ	Opaque white polyester 97μ

¹ Nominal thickness. Actual thickness varies slightly from lot-to-lot.

GAFCHROMIC® RTQA FOR HDR APPLICATION

GAFCHROMIC®-RTQA -111 which is 1.25"x11" in dimension is aimed for HDR positioning verification. It is designed to be used in phantom or directly taped under a catheter. Mark the catheter position with a pen and check the autoradiographic image against the marks. A key advantage of the RTQA-111 strip is stability and alignment. It eliminates the concern about film movement inside a ready pack thus increasing the accuracy of measurement. With dwell time anywhere between 0.5 sec to 2.0 sec and depending on the source, RTQA-111 film exhibits sharp images clearly showing source position.

Look for GAFCHROMIC® EBT for Quantitative IMRT application.



Exposed GAFCHROMIC® EBT Film

- **Self Developing**
- **Dose Sensitivity Ranges from 0.02Gy to 8Gy**
- **Can be handled in room light**
- **Water immersible**
- **For dosimetry**

IMRT QA system consisting of:

1) QD+ Quickstart package (includes 4 EBT boxes, scanner and 1 day hands on training.)

Note: (QD+ Quickstart Deluxe package with larger scan format is also available.)

2) FilmQA



INTERNATIONAL SPECIALTY PRODUCTS

In the US, for customer service or to place an order, **CALL TOLL FREE** (877) 591-7884
Outside the US, contact the product manager: **Tel:** (973) 628-3531 **Fax:** (973) 628-3016
Technical Hotline: (866) 218-0594

Visit our web site: www.gafchromic.com

Or Write:

INTERNATIONAL SPECIALTY PRODUCTS
Advanced Materials Group
1361 Alps Road
Wayne, NJ 07470