

Vascular Access Training Phantom Kit



Develop skills for ultrasound guided veni-puncture and injection techniques in a non-stressful environment

The CIRS Model 072 Vascular Access Training Phantom Kit was designed to provide a realistic training medium for needle insertion. The phantom is made from a durable elastometric compound mimicking the tactile feel and puncture resistance of soft tissue. This self healing material has realistic acoustic properties allowing imaging of the simulated palpable vessels under ultrasound. The phantom includes one bifurcated vessel and 2 straight walled vessels at a variety of depths and diameters to simulate a range of challenges often encountered in the clinical environment. The phantom measures approximately 100mm (W) x 160mm (L) x 30mm (H). The phantom can be easily replenished without leakage using a syringe (included) and a stopcock enables increased vessel pressure for more realistic simulation. The kit also includes needles and a supply of simulated blood. The phantom requires no special handling and will not dry out.



Model 072

Benefits

- Teach vein recognition through palpation
- Teach ultrasound scan techniques
- Develop hand-eye coordination in non-stressful environment
- Demonstrate and practice various insertion techniques
- Experiment with new procedures and evaluate new devices
- Self sealing for repeated use

*Tissue Simulation &
Phantom Technology*

CIRS

2428 Alameda Avenue • Suite 316 • Norfolk, Virginia 23513 • USA
(800) 617-1177 • (757) 855-2765 • FAX (757) 857-0523
www.cirsinc.com • admin@cirsinc.com

Model 072 Specifications:

PHANTOM MATERIAL: Proprietary, non-toxic elastomer

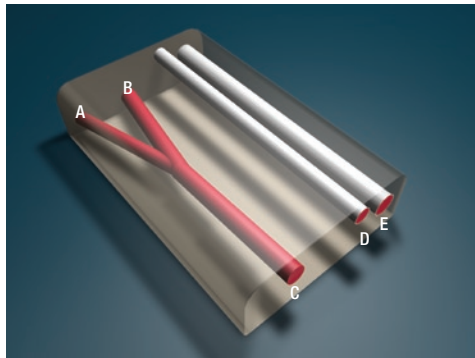
PHANTOM SIZE: 100 mm W x 160 mm L x 30 mm H

VESSELS (nominal dimensions in mm)

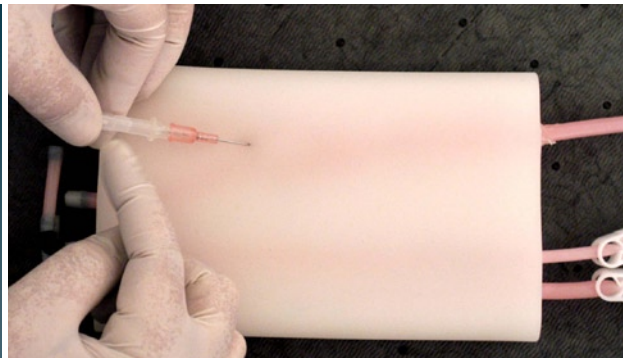
Vessel	ID	OD	Wall Thickness	Depth to Center
A	3	NA	NA	8
B	4	NA	NA	9.5
C	5	NA	NA	10.5
D	3	4	0.8	7.5
E	5	6	0.6	14.5

MODEL 072 INCLUDES:

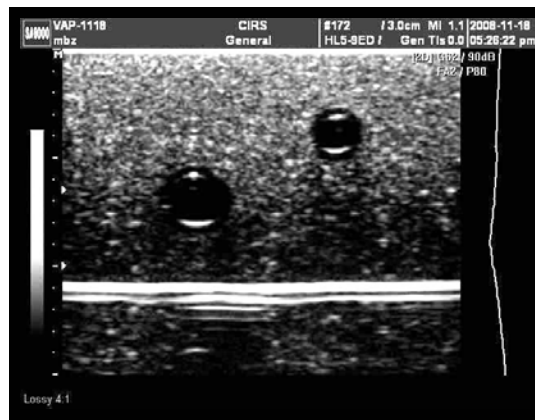
- 1 Vascular Access Training Phantom
- 1 Bottle Simulated Blood
- 2 Needles
- 1 Syringe
- Handling Instructions
- 6 Month Warranty



Internal Layout



Top View



Cross-section of vessels

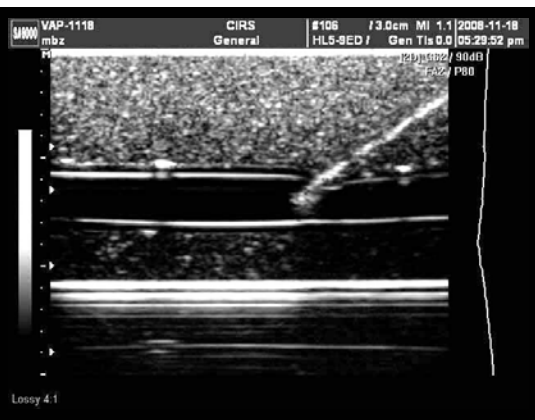


Image of needle entering vessel