

**A NEW ERA** of Breast and Thorax patient positioning has arrived.

# SaBella FLEX™

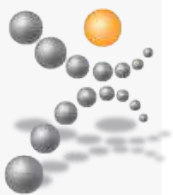
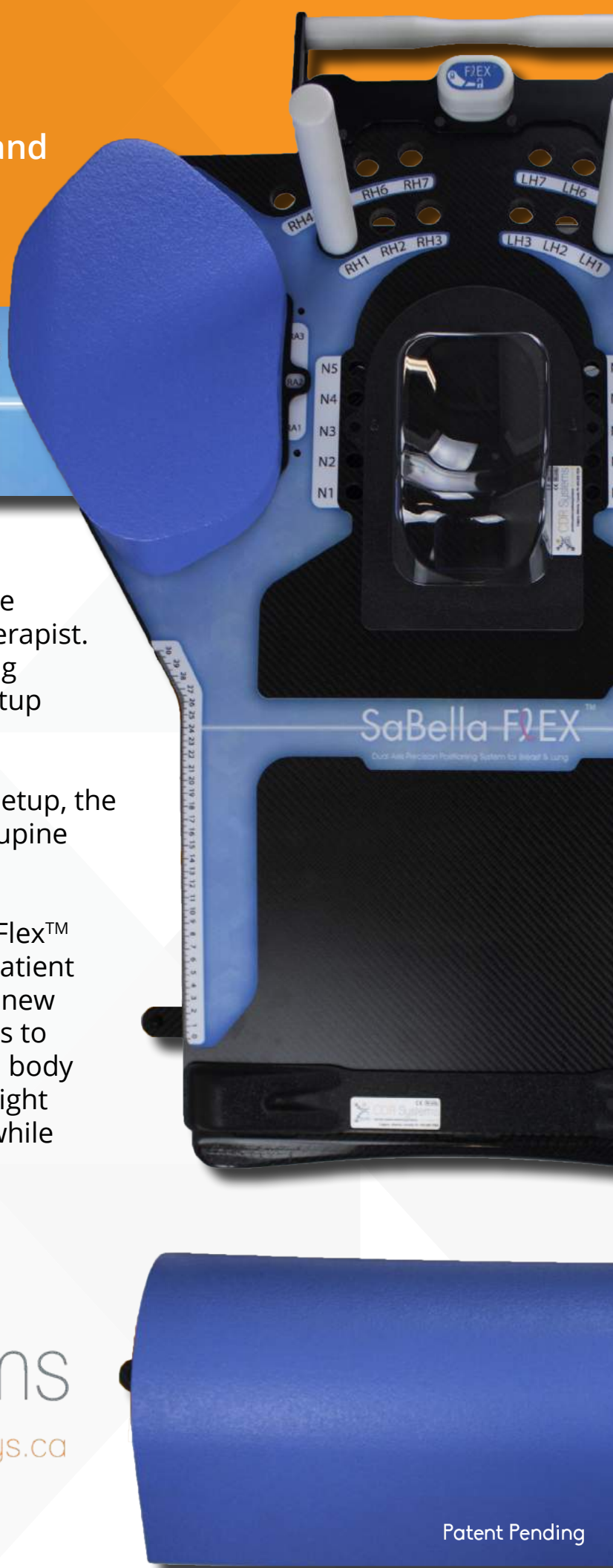
Dual Axis Precision Positioning System for Breast & Lung

with SafeLock™

Traditional, single axis breast boards have become dated and labor intensive for therapist. Those devices utilize dated manufacturing techniques resulting in limited patient setup options.

Helping lighten the load of daily patient setup, the SaBella Flex™ is 50% lighter than other Supine Breast and boards available.

The extremely radio-translucent Sabella Flex™ system is customizable to an individual patient in ways never before possible, offering a new dimension of patient set-up combinations to perfectly adhere to each patient's unique body shape and treatment profile. The lightweight Sabella Flex™ easily sets up, in seconds while maintaining absolute stability that is not affected by even the largest patients.

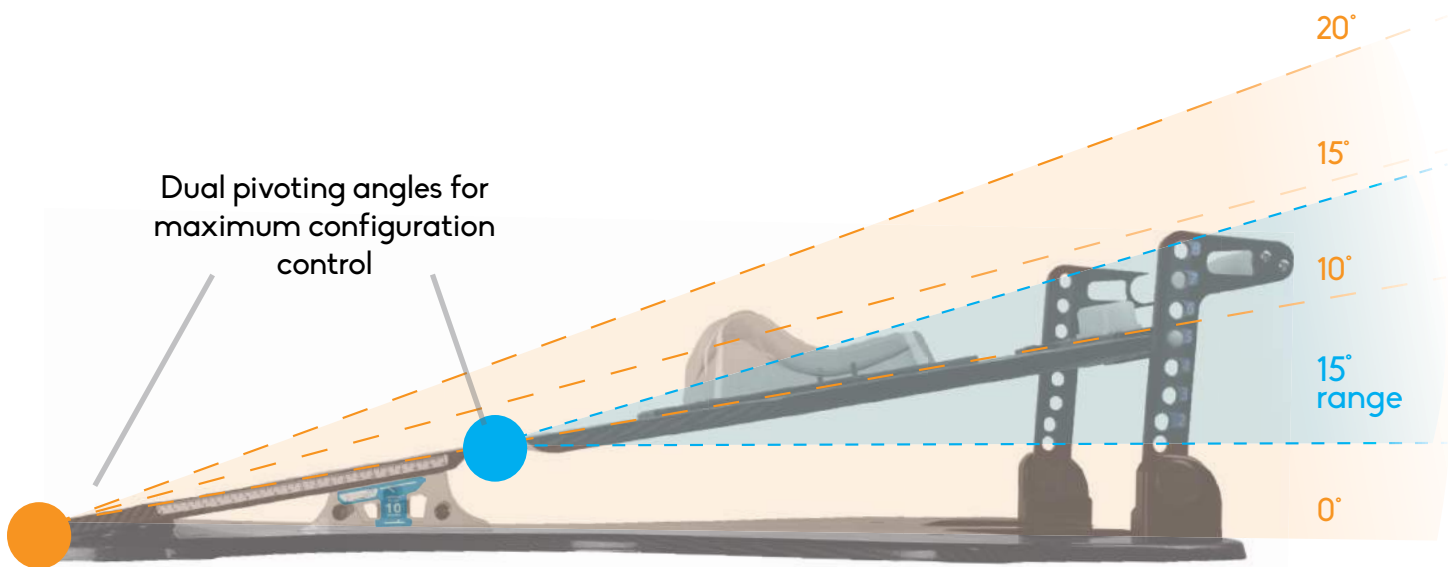


CDR Systems

[www.cdrsys.ca](http://www.cdrsys.ca)



Patent Pending



The lightweight carbon fiber SaBella Flex™ can quickly and securely be adjusted and indexed to maximize treatment requirements and patient comfort. All Adjustments can be made to the system with the patient in situ saving time while maximizing patient comfort.

### Clinical Benefits

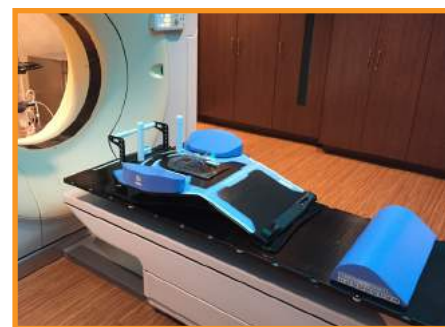
- Dual Flex™ adjustability allowing a wider range of patient positioning than conventional breast and Thorax boards.
- Elevation angles of 0°, 10°, 15° and 20°.
- Secondary Flex system provides an indexable and comfortable method to optimize a patient's chin and cranial position independently of breast on slope position.
- Both the **SafeLock™** Wedge & Upper Indexing system provide unmatched stability eliminating potential injuries to patients and therapists.
- Lightweight with carry handles for ease of moving.
- Vacuum cushion compatible for chest and thorax areas.
- Available wall mount for ergonomic and easy storage.

### Patient Benefits

- Comfortable indexable arm, neck and head modules.
- Comfortable foam modules for arms and butt stop.
- Adjustments can be made quickly minimizing patient set-up & treatment time.
- COPD patient compatible.
- Secure, sturdy feel without any flex regardless of patient size.

### SaBella Flex™ Technical Specifications

MATERIALS	Ultra low density carbon fiber
WEIGHT	5.7 kg / 12.6 lbs
PATIENT WEIGHT LIMIT	182 kg / 400 lbs
DIMENSIONS	90cm X 66cm X 16cm (flat position)
MR SAFE	Available (contact sales representative)





With the optional head and neck immobilization module and The SaBella Flex™ offers a complete solution for COPD patients. For ultimate comfort and accuracy the Intuition frame is compatible.



3\* Interchangeable arm/shoulder bolsters for each side allowing optimum patient comfort and positioning

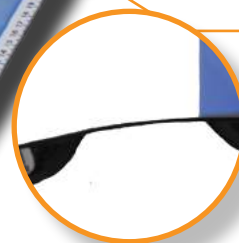
Upper indexing SafeLock™ system allowing single handed operation with 8 index positions



Prominent Millimetric scale on top and side surface ensures patient positioning is fast and simple



High stability SafeLock™ angle range 0° - 20° ensures ultimate safety of patient and therapist



Secondary flex position provides new patient set-up options before possible



Available Breast Support LT-Thermoplastic™

Optional vacuum cushion indexing module



Dual purpose patient stop and leg rest indexable in 9 positions to fit most patients



# SaBella Prone™

Patent Pending



Engineered for comfortable, accurate and quick setup of breast patients in the prone position. Allowing for lateral offsetting of patient when necessary.

## Physician Benefits

- Displacement of the lumpectomy cavity away from chest wall, heart and Thorax
- Reduction in cardiac systole and respiratory movement
- Enhanced cosmetic results with reduced soreness and skin reaction
- Contralateral Breast Support Plate and cushion are Interchangeable for left or right side
- 10° angled Contralateral Breast support wedge available. Breast options adjustable 18-28cm
- Optimized daily reproducibility
- Super Clave specific model available (PB06-S)

## Patient Benefits

- Supportive and comfortable padding available in soft or firm variations
- Adjusts can be made quickly with the patient in situ
- No patient weight limit (refer to reference guide for more details)

**Contact your sales representative for more detailed information on the SaBella Prone™ device.  
Ask about our LIVE personalized eDemos for these and any CDR products**

Online: [www.cdrrsys.ca](http://www.cdrrsys.ca)  
Phone: +1.855.856.7035 Local +403.850.7035  
Email: [info@cdrrsys.ca](mailto:info@cdrrsys.ca)



CDR Systems Inc. | #33, 235105 Wrangler Drive | Calgary, Alberta | T1X 0K3

CDR SYSTEMS © 2015 ALL RIGHTS RESERVED. CDR SYSTEMS IS A REGISTERED TRADEMARK OF CDR SYSTEMS INC. ALL OTHER TRADEMARKS ARE PROPERTY OF THEIR RESPECTIVE OWNERS. | FD-IFU-EN-V1508 2015-08-07



Advena Ltd | Pure Offices, Plato Close  
Warwick, CV34 6WE, UK  
Ph: +44 (0) 1926 800153