

Stereotactic Needle Biopsy Training Phantom

Model 013



A COMPRESSIBLE BIOPSY TRAINING PHANTOM THAT WON'T LEAK

The CIRS Stereotactic Needle Biopsy Training Phantom is a disposable training tool and practice medium for mammographic needle biopsy procedures. The phantom also serves as an excellent quality assurance device for stereotactic systems and should be used whenever a new system is installed or repaired to ensure accurate needle placement. The phantom can be used to perform the localization accuracy test in the American College of Radiology's stereotactic breast biopsy accreditation program.

Embedded dense masses and microcalcifications vary in size and are colored for easy visualization. Masses and calcifications can be biopsied multiple times.

The phantom body is shaped to represent a partially compressed breast. The phantom is made from a proprietary gel with a physical consistency similar to human tissue, surrounded by an elastic skin-like membrane. The material is easily compressed for optimum imaging.

The CIRS Model 013 Stereotactic Needle Biopsy Training Phantom provides a simple training solution for mammographic needle biopsy procedures.

Features

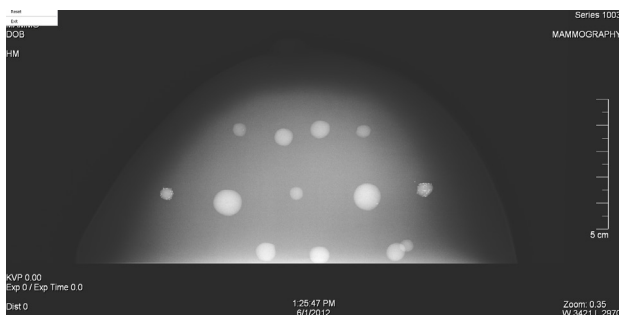
- Compressible
- Does not leak when punctured
- Contains various sizes of dense masses for biopsy
- Contains calcification clusters for visualization and biopsy
- Anthropomorphic shape for accurate simulation of breast compression
- Simulates needle resistance
- Physical consistency similar to human tissue
- Compatible with both stand alone and add-on stereotactic biopsy systems
- Works on digital systems

2428 Alameda Avenue Suite 316 • Norfolk, Virginia 23513 • USA
Tel: 800.617.1177 • 757.855.2765 • Fax: 757.857.0523

WWW.CIRSINC.COM

CIRS

Tissue Simulation & Phantom Technology



Mammography image of Model 013

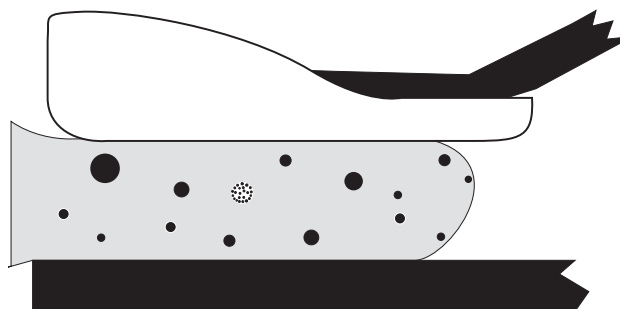


Illustration of Model 013 positioned on bucky

TARGETS	SHAPE	COLOR	SIZE RANGE	QTY	POSITIONING
Dense Masses	Round	Black	1-6 mm	11	Random
Microcalcifications	Round	Orange	300 - 350 microns	2 clusters	Mid-Plane on right and left sides

Note: Calcifications are grouped around radiographically transparent white mass

SPECIFICATIONS

DIMENSIONS:	10 x 16.5 x 5 cm (6.5" x 2.5" x 4")
PHANTOM WEIGHT:	1 lbs. (0.4 kg)
PHANTOM VOLUME:	530 cc
MATERIALS:	Polyurethane

MODEL 013 INCLUDES

QTY	COMPONENT DESCRIPTION
1	Stereotactic Needle Biopsy Training Phantom
1	User Guide
-	6-Month Warranty