



# MagIQ & MagIQ Duo

## MRI Phantom

An image quality phantom for magnetic resonance imaging comprising a single chamber (MagIQ) or two identical chambers (MagIQ Duo) which may be filled with different solutions to create two test objects (e.g. high field and low field). A total of 5 (MagIQ) or 10 (MagIQ Duo) separate signal compartments can be used.

MagIQ includes the following features:

**Reproducible positioning and test conditions**

- white pigment-filled centre markings
- integral bubble level
- external LCD temperature strip

**Geometric Distortion**

- An array of 25.0mm uniformly pitched, high contrast circles

**Spatial Resolution**

- LP/mm (1.0 LP/mm)
- MTF edge block

**Contrast Resolution**

**Fat Suppression**

- 8 user defined compartments (4 x in each arrangement)

**SNR / Ghosting / Uniformity**

- Flood-fill section for measurement of SNR, ghosting, uniformity

**Slice Profile**

- Wedges or 'virtual plates' can be used for slice profile measurements



**Dimensions:** 230mm diameter (254mm with caps), 100mm deep (solo).

[www.leadstestobjects.com](http://www.leadstestobjects.com)



# MagIQ & MagIQ Duo

MRI

## Test Features

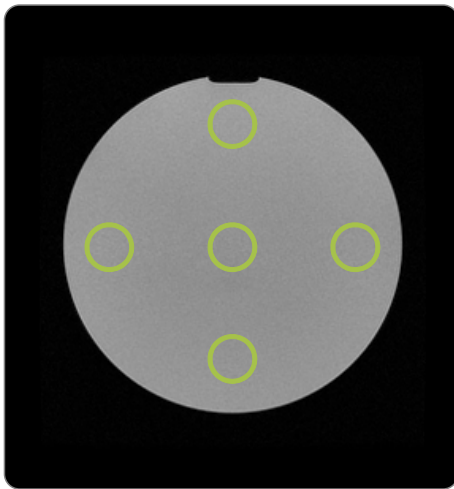


fig. 1 SNR, ghosting and uniformity

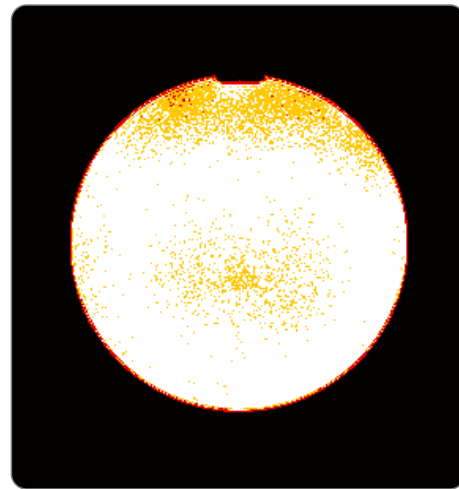


fig. 2 Uniformity map

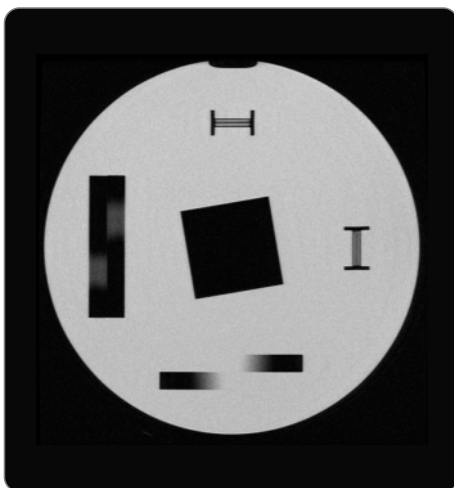


fig. 3 Spatial frequency, slice profile

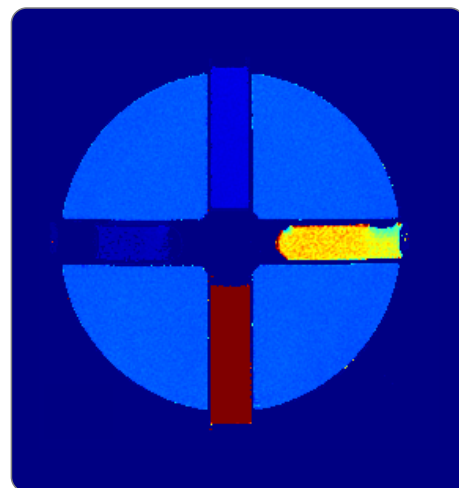


fig. 4 Contrast resolution



# MagIQ & MagIQ Duo

## MRI

## Test Features & accessories

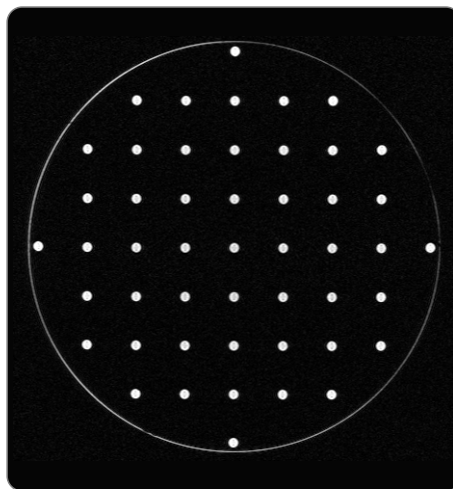
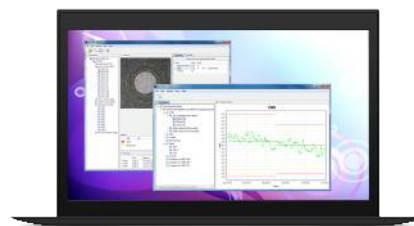


fig. 5 Geometric distortion

## Accessories



A set of 18 gel-filled tubes with calibrated T1 and T2 values, sized to insert into the contrast sections of MagIQ Solo and MagIQ Duo phantoms. Available separately.



Auto-scoring software for quick analysis of the QA parameters tested with MagIQ. Available separately.

For more information visit us at [www.leadstestobjects.com](http://www.leadstestobjects.com)